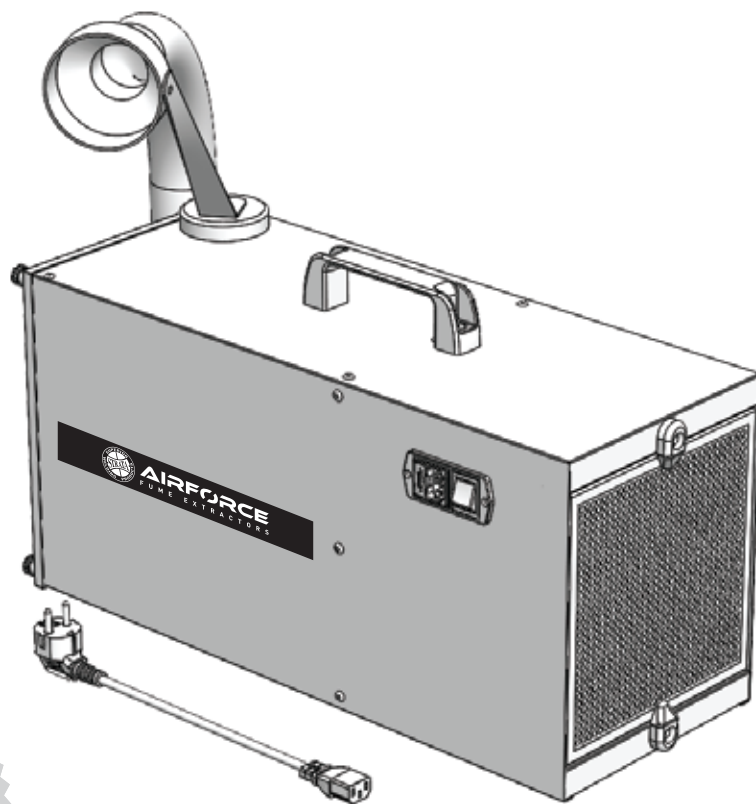




AIRFORCE FE110

PORTABLE FUME EXTRACTOR

OPERATING INSTRUCTIONS



👉 IMPORTANT!

Read these Operating Instructions Completely before attempting to use this machine. Save this manual and keep it handy for quick reference. Pay particular attention to the safety instructions we have provided for your protection. Contact your distributor if you do not fully understand anything in this manual.



230V 50HZ
SINGLE
PHASE



MADE IN
ITALY



M CLASS
FILTER



ACTIVE
CARBON
FILTER



CONTENTS

1. GENERAL INFORMATION	3
1.1. Introduction	3
1.2. Information on copyright and related rights	3
1.3. Instructions for the user	3
2. SAFETY	4
2.1. General information	4
2.2. Warnings and symbols in the user manual	4
2.3. Signs applied by the user	4
2.4. Safety warnings for the operator	5
2.5. Safety warnings for maintenance and troubleshooting	5
2.6. Warning about specific dangers	6
3. UNIT DESCRIPTION	7
3.1. Purpose	7
3.2. Features and versions	8
3.3. Proper use	8
3.4. Improper use of the unit	8
3.5. Marks and labels on the unit	9
3.6. Residual risk	10
4. TRANSPORT AND STORAGE	11
4.1. Transport	11
4.2. Storage	11
5. ASSEMBLY	11
5.1. Unpacking	11
6. USE	12
6.1. User qualification	12
6.2. Elementi di comando	12
6.3. Start of the unit	12
7. REGULAR MAINTENANCE	13
7.1. CARE	13
7.2. Ordinary maintenance	13
7.3. Replacement of filters	14
7.4. Maintenance on motor	15
7.5. Troubleshooting	16
7.6. Emergency measures	16
8. DISPOSAL	17
8.1. Plastics	17



FE110

8.2. Metals	17
8.3. Filter media	17
9. ATTACHMENTS	18
9.1. AIRFORCE FE110 Technical data	18
9.2. Spare parts and accessories	19
9.3.1. EC declaration of conformity	20
9.3.2. UK Declaration of Conformity (UKCA)	21
9.4. Dimensions	22
9.5. Wiring diagram	22



1. GENERAL INFORMATION

1.1. Introduction

This user manual provides important information for the correct and safe operation of the mobile filter unit AIRFORCE FE110 suitable for extraction of welding fumes.

The instructions contained in this manual help to avoid dangers, to reduce repair costs and machine downtime and to increase the reliability and lifetime of the unit.

The user manual shall always be at hand; all information and warnings contained therein shall be read, observed and followed by all people who work by the unit and are involved in tasks, such as:

- transport and assembly;
- normal use of the unit during work;
- maintenance (replacement of filters, troubleshooting);
- disposal of the unit and its components.

1.2. Information on copyright and related rights

All information included in this instruction manual must be treated confidentially and may be made available and accessible only to authorized people.

It may be disclosed to third parties only with the prior written consent of the Manufacturer.

All documentation is protected under the copyright law.

Any reproduction, total or partial, of this document, as well as its use or transmission without prior and explicit authorization by the Manufacturer, is prohibited.

Any violation of this prohibition is punishable by law and involves penalties.

All rights relating to industrial property rights are reserved to the Manufacturer.

1.3. Instructions for the user

These Instructions are an integral part of the unit AIRFORCE FE110.

The user must ensure that all personnel in charge of the unit have adequate knowledge of these Instructions.

The user is required to complete the Manual with instructions based on national regulations for injury prevention and environmental protection, including information on surveillance and notification obligations, in order to consider specific requirements, such as organization of work, working methods and personnel involved.

In addition to the instructions and regulations for the prevention of accidents, in force in the country and in the place where the unit is used, it is necessary to comply with the common technical principles for a safe and correct use of the unit.

The user shall not make any modifications to the unit, nor add parts or adjust it without permission by the Manufacturer because this could jeopardize its safety!

The spare parts used shall correspond to the technical specs established by the Manufacturer.

Always use original spare parts to ensure correspondence of the unit to the technical specifications.

Allow only trained and expert personnel for the operation, maintenance, repair and transport of the unit.

Establish individual responsibilities for operation, configuration, maintenance and repair.



2. SAFETY

2.1. General information

The unit was developed and manufactured using the latest technology and in accordance with the general workplace safety guidelines.

However, the use of the unit could present risks for the operator or risks of damage to the unit and other objects:

- If the personnel in charge has not received instructions or training;
- In case of use that is not in accordance with the intended purpose;
- In case of maintenance that is not carried out as indicated in this manual.

2.2. Warnings and symbols in the user manual



DANGER

This warning indicates an imminent dangerous situation.
Not respecting it can result in death or serious injury.



WARNING

This warning indicates a possible dangerous situation.
Not respecting it can result in death or serious injury.



WARNING

This warning indicates a possible dangerous situation.
Not respecting it can result in minor injury or material damage.



INFO

This warning provides useful information for safe and proper use.

- The point in bold marks the work and / or operating procedure.
The procedures need be performed in sequence.
- Any list is marked with a horizontal dash.

2.3. Signs applied by the user

The user is responsible for the application of signs on the unit or in the near area.

Such signs may concern, for example, the obligation to wear personal protective equipment (PPE).

Refer to the local regulations for advice.



FE110

2.4. Safety warnings for the operator

Before using the unit, the operator in charge must be suitably informed and trained for the use of the unit and the relevant materials and means.

The unit must only be used in perfect technical condition and in compliance with the intended purposes, the safety standards and the warnings relating to dangers as reported in this Manual.

All failures, especially those that can jeopardize safety, shall be removed immediately!

Each person responsible for commissioning, use or maintenance of the unit must be familiar with these instructions and must have understood their content, especially paragraph 2 Safety.

It is not enough to read the manual for the first time when you are already working.

This is especially true for people who work on the unit only occasionally.

The manual shall always be available near the unit.

No liability is accepted for damage or injury due to failure to comply with these instructions.

Observe the current workplace precaution rules, as well as other general and standard technical safety and hygiene tips.

Individual responsibilities for the various maintenance and repair operations must be clearly established and respected. Only in this way malfunctions can be avoided - especially in dangerous situations.

The user shall ensure that the personnel responsible for use and maintenance of the unit shall wear personal protective equipment (PPE). These are mainly safety shoes, goggles and protective gloves.

Operators must not wear long loose hair, baggy clothing or jewelry! There is a risk of being trapped or drawn in by the moving parts of the unit!

In case of any changes on the unit, that may affect safety, switch off the equipment immediately, secure it and report the incident to the department / person in charge!

Interventions on the unit can only be carried out by competent, reliable and trained personnel.

Personnel undergoing training or in a training program may only be permitted to work on the unit under the constant supervision of a trained person.

2.5. Safety warnings for maintenance and troubleshooting

For all maintenance and troubleshooting, ensure to use suitable personal protective equipment.

Before proceeding with any maintenance work, clean the unit.

An industrial vacuum cleaner with H efficiency class for dust can be helpful.

The preparation, maintenance and repair operations, as well as the detection of faults can only be carried out if the unit is without power supply:

- Remove the plug from the mains supply.

All screws that were loosened during maintenance and repair work need always be fastened again!

If so foreseen, the screws must be tightened with a torque wrench.

Before proceeding with maintenance and repairs it is necessary to remove all impurities, especially on the parts fastened with screws.



FE110

2.6. Warning about specific dangers



DANGER

All work on the electrical device of the unit shall be carried out exclusively by a qualified electrician or by personnel with the necessary training, under the direction and supervision of a qualified electrician and in accordance with the relevant safety standards.

Before any activity on the unit, it is necessary to disconnect the electric plug from the mains supply, to prevent accidental restarting.

Use only original fuses with the prescribed current limit.

All electrical components to be inspected, maintained and repaired must be disconnected. Block the devices used to disconnect the voltage, in order to avoid accidental or automatic restart.

First check the absence of voltage on the electric components, then isolate the adjacent components. During repairs, be careful not to modify the factory parameters so as not to jeopardize safety.

Check the cables regularly and replace in case of damage.



WARNING

Skin contact with welding powders etc. can cause irritation to sensitive people.

Repair and maintenance of the unit must only be carried out by qualified and authorized personnel, in compliance with safety requirements and accident prevention regulations in force.

Danger of serious damages to respiratory system.

To prevent contact with dust and inhalation, use protective clothing and gloves and an assisted ventilation device to protect the respiratory tissue.

During repairs and maintenance interventions, avoid diffusion of dangerous dust, in order to prevent health damage even of people not directly affected.



WARNING

The unit can produce noise emissions, specified in detail in the technical data.

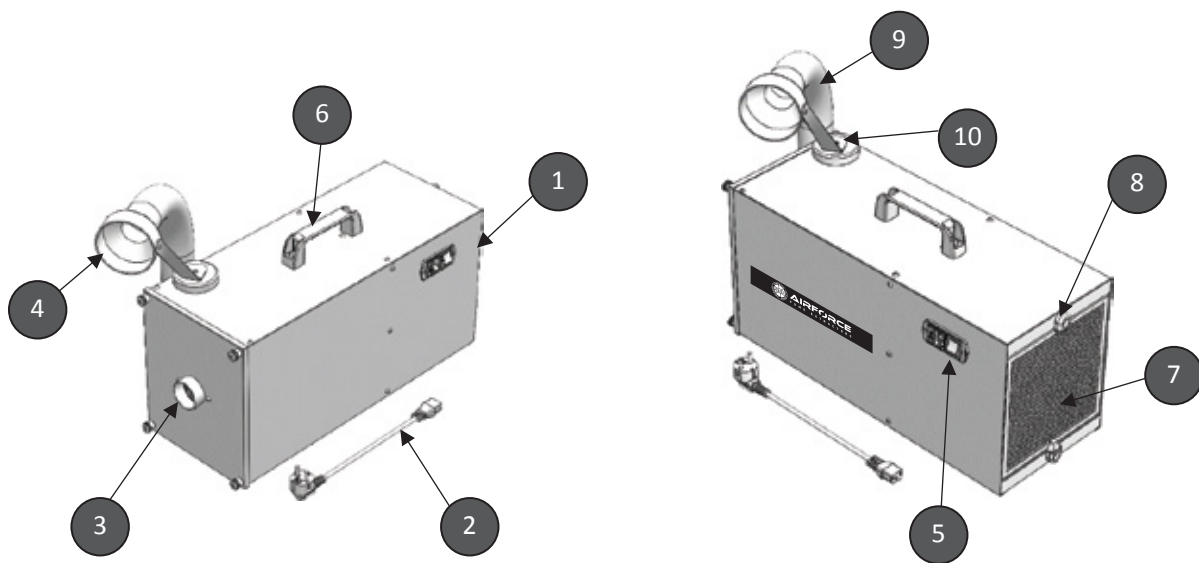
If used with other machinery or due to the characteristics of the place of use, the unit may generate a higher sound level.

In this case, the person in charge is required to provide the operators with adequate protective equipment.

3. UNIT DESCRIPTION

3.1. Purpose

The unit is a compact mobile device suitable for filtration of welding fumes extracted directly at source. The unit is equipped with a flex hose and capture hood with magnetic support. The fumes (rich in polluting particulate) are purified through a multi-stage filtering section, before being released back in the workplace.



Pos.	Description
1	Cabinet
2	Electrical cable
3	Air inlet
4	Capture hood
5	ON-OFF switch

Pos.	Description
6	Handle
7	Air discharge/carbon filter
8	Flex hose Ø 50mm
9	Filter fastener
10	Magnetic support



FE110

3.2. Features and versions

The mobile air cleaner is available in the following version:

- **AIRFORCE FE110**
with cartridge filter - mechanical filtration
high filter efficiency: $\geq 99\%$ | M (sec. DIN 660335-2-69) | E12 (sec. UNI EN 1822:2019)
active carbons: 0,89Kg | absorption: 0,178kg

3.3. Proper use

The unit has been conceived to extract and filter the welding fumes generated by industrial welding processes, directly at source. In principle, the unit can be used in all work processes with emission of welding fumes. However, it is necessary to prevent the unit from sucking in "spark showers" from grinding or similar.

Pay attention to the dimensions and further data that are mentioned in the technical data sheet.



INFO

Carefully read and comply with the instructions in chapter "9.1 Technical data of the unit". The use in accordance with the instructions of this manual also means following the specific instructions:

- for safety;
- for use and setting;
- for maintenance and repair,

mentioned in this user manual.

Any further or different use is to be considered as non-compliant.

The user of the unit is the sole responsible for any damage resulting from such non-compliant use.

This also applies to arbitrary interventions and unauthorized modifications on the unit.

3.4. Improper use of the unit

The unit is not suitable for use in hazardous areas falling under ATEX regulation.

Furthermore, the equipment should not be used in the following cases:

- Applications not corresponding to the intended purpose or not indicated for proper use of the unit and in which the air to be extracted:
 - contains sparks, for example from grinding, of a size and quantity such as to damage the suction arm and set fire to the filtering section;
 - contains liquids that may contaminate the air flow with vapors, aerosols and oils;
 - contains easily flammable dusts and / or substances that may cause explosive mixtures or atmospheres;
 - contains other aggressive or abrasive powders that may damage the unit and its filters;
- The unit is in an outdoor area, where it is exposed to atmospheric agents: the unit must be installed exclusively in closed and / or repaired buildings.
- Startups-to avoid for a proper use of the unit:



FE110

- Very frequent and close switching on and off of the motor, because in such cases the motor brushes are heavily stressed and subject to up to 6 times the supply voltage;
- Prolonged use without the possibility of cooling down and with a partially or completely clogged filter section;

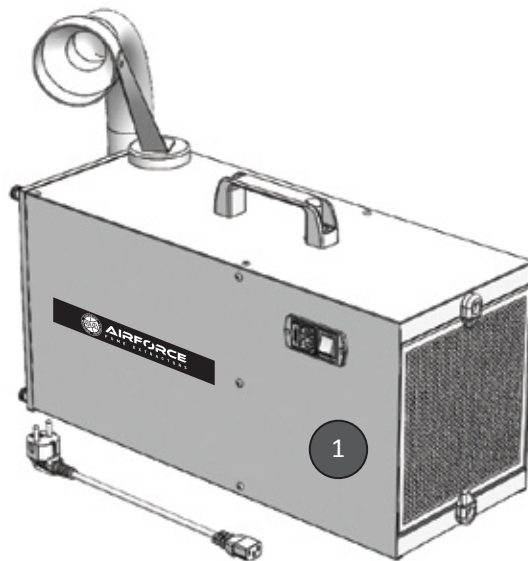
Any waste, such as for example collected particles, may contain harmful substances, therefore they must not be delivered to landfills for municipal waste. It is necessary to provide for an ecological disposal according to local regulations.

If the unit is used in accordance with its intended purpose, there is no reasonably foreseeable risk of improper use that might endanger health and safety of personnel.

3.5. Marks and labels on the unit

The unit has marks and labels which, if damaged or removed, need be immediately replaced with new ones in the same position.

The user may have the obligation to place other marks and labels on the unit and in the surrounding area, e.g. referring to the local regulations for the use of personal protective equipment (PPE).



Label	Description	Position	Notes
Label [1]	Rating plate and CE mark	1	



FE110

3.6. Residual risk

The use of the unit involves a residual risk as illustrated below, in spite of all safety measures.

All users of the unit must be aware of the residual risk and follow the instructions to avoid any injury or damage.



WARNING

Risk of serious damage to the respiratory system - wear a protective device in class FFP2 or higher.

Skin contact with cutting fumes etc. can cause skin irritation in sensitive individuals. Wear protective clothing.

Before carrying out any welding job, make sure that the unit is positioned / installed correctly, that the filters are complete and intact and that the unit is active!

The unit can perform all its functions only when it has been switched on.

By replacing the various filters that make up the filtering section, the skin can come into contact with the separated powder and the processes carried out can volatilize this powder. It is necessary and mandatory to wear a mask and a protective suit.

Burning material sucked in and trapped in one of the filters, can cause smoldering. Switch off the unit, close the manual damper in the capture hood, and allow the unit to cool down in a controlled manner.



FE110

4. TRANSPORT AND STORAGE

4.1. Transport



DANGER

Danger of death from crushing during unloading and transport.
Improper maneuvers during lifting and transport can cause the pallet with the unit to overturn and fall.

- Never stand under suspended loads.

A transpallet or forklift truck are suitable for transporting any pallet with the unit.
The weight of the unit is indicated on the rating plate.

4.2. Storage

The unit shall be stored in its original packaging at an ambient temperature between -20° C and +50° C in a dry and clean place.

The packaging must not be damaged by other objects.

For all units, the duration of storage is irrelevant.

5. ASSEMBLY

5.1. Unpacking

The unit is delivered on a pallet and protected by a cardboard box.

Pallet and box are held together by two straps.

A copy of the rating plate of the unit is applied also outside the box.

Prepare unpacking as follows:

- Cut the straps with scissors or cutter;
- Open the cardboard box;
- Remove any additional packages contained.

6. USE

Anyone involved in the use, maintenance and repair of the unit must have read and understood this user manual as well as the instructions for accessories and related devices.

6.1. User qualification

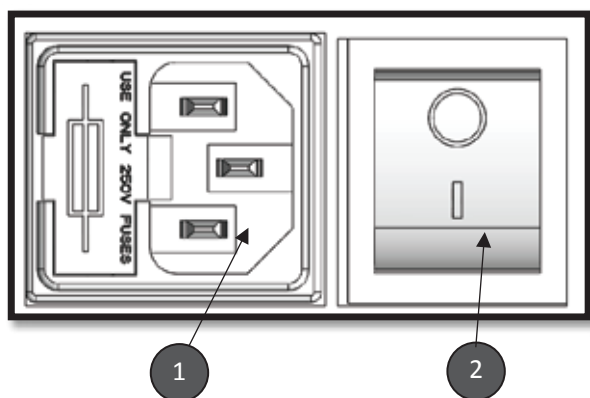
The user of the unit can only authorize the use of the unit by personnel with a good knowledge of these operations.

Knowing the unit means that the operators have been trained on the functions, and know the user manual and operating instructions.

The unit shall only be used by qualified or duly trained personnel. Only in this way is it possible to ensure working in a safe manner and in awareness of dangers.

6.2. Elementi di comando

The control panel is on one side of the unit:



Pos.	Description	Notes
1	Socket C13	
2	ON-OFF switch with light	

6.3. Start of the unit

- Connect the unit to the mains supply; notice the data shown on the rating plate.
- Switch ON the unit using the main switch.
- The fan starts running and the green light turns on.
- Finally, always adjust the capture hood in position according to the work process.



7. REGULAR MAINTENANCE

The instructions in this chapter correspond to the minimum requirements.

Depending on particular operating conditions, other specific instructions may be applicable to keep the unit in perfect conditions.

The maintenance and repairs described in this chapter may only be performed by qualified personnel.

The spare parts used must correspond to the technical requirements established by the Manufacturer.

This is always guaranteed if original spare parts are used.

Dispose in a safe and environmentally friendly way of the materials used and the components replaced.

Respect the following instructions during maintenance:

- Chapter 2.4 Safety warnings for the operator;
- Chapter 2.5 Safety warnings for maintenance and troubleshooting;
- Specific safety warnings, reported in this chapter in correspondence with each intervention.

7.1. CARE

Taking care of the unit essentially means cleaning the surfaces, removing dust and deposits, and checking the condition of the filters.

Follow the warnings indicated in the "Safety instructions for repairing and troubleshooting" chapter.



WARNING

Skin contact with dust and other substances deposited on the unit can cause irritation to sensitive persons!

Danger of serious damage to the respiratory system!

To avoid contact and inhalation of dust, it is recommended to use protective clothing, gloves and a mask with a FFP2 class filter according to EN 149 standard.

During cleaning, prevent dangerous dust from being diffused in order to avoid damage to the health of persons nearby.



INFO

The unit must not be cleaned with compressed air!

Particles of dust and / or dirt could be diffused in the surrounding environment.

Adequate consideration helps to keep the unit in perfect order for a long time.

- The unit shall be cleaned thoroughly every month.
- The external surfaces of the unit shall be cleaned with a "H" class industrial vacuum cleaner suitable for dust, or with a damp cloth.
- Check that the flexible hose is not damaged.

7.2. Ordinary maintenance

To ensure a safe operation of the unit, it is advisable to carry out a maintenance activity and overall check at least once every 3 months.

The unit does not require any specific maintenance, except for the replacement of the filters if necessary and the inspection of the articulated arm.

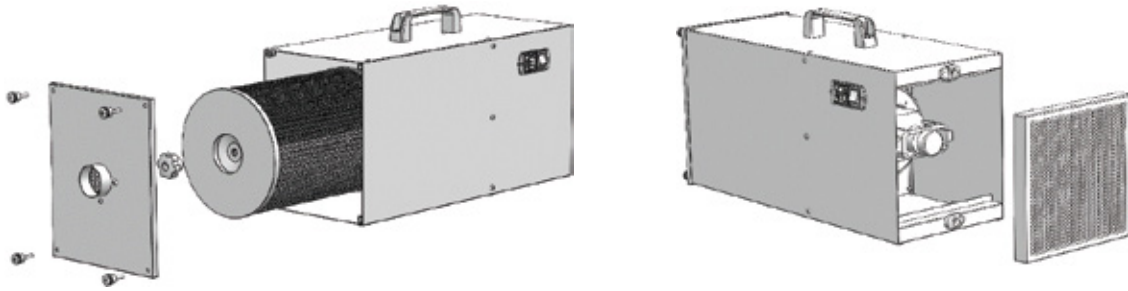
Follow the warnings given in paragraph 2.5 "Safety warnings for maintenance and troubleshooting".

7.3. Replacement of filters

The lifetime of the filters depends on the kind and quantity of particles extracted.

It is advisable to periodically replace the filters, depending on the use, for example every 3 months, and not to wait for complete clogging.

The more are clogged the filters the narrower is the air flow, with a reduction of the extraction capacity. In most cases it is sufficient to replace the prefilters. Only after several replacements of prefilters will the main filter need replacing too.



WARNING

It is forbidden to clean fabric filters (all kinds): corrugated, pocket and cartridge filters. Cleaning would cause damage to the filter stuff, compromising the function of the filter and leading to escape of hazardous substances into the ambient air. In case of a cartridge filter, pay particular attention to the filter seal; only if the seal is free from damages or imperfections it is possible to guarantee a high level of filtration. Filters with damaged seals shall always be replaced.



WARNING

Skin contact with dust and other substances lying on the unit can cause irritation to sensitive persons!
 Danger of serious damage to the respiratory system!
 To avoid contact and inhalation of dust, it is recommended to use protective clothing, gloves and a mask with a FFP2 class filter according to EN 149 standard.
 During cleaning, prevent dangerous dust from being diffused in order to avoid damage to the health of other persons.
 To this purpose, carefully insert the dirty filters inside bags with sealing and use an industrial vacuum cleaner for dust with efficiency class "H" to suck up any dust dropped during the filter extraction phase.

Proceed as per the following instructions:

- Use only original replacement filters, as only these filters can guarantee the required filtration level and are suitable for the unit and its performance.
- Turn off the unit by the main switch.



FE110

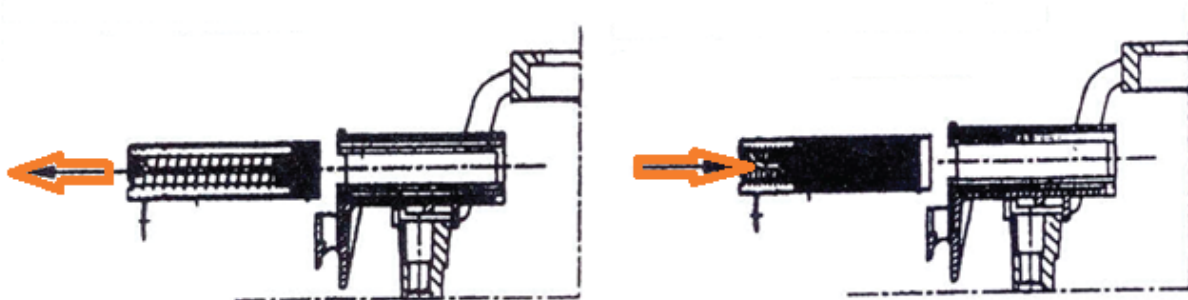
- Secure the unit by pulling out the plug from the C13 socket, so that it cannot be accidentally restarted.
- Open the inspection panel on the side of the unit.
- Carefully remove the metal prefilter, in order to avoid any lifting up of dust.
- Carefully place the filter in a plastic bag, while avoiding any dust diffusion, and close it, for example with cable ties.
- Insert the new filter in the guides.
- Carefully take out the cartridge filter, taking care to avoid any dust diffusion.
- Put the filter in a plastic bag and close it, for example with cable ties.
- Suitable plastic bags can be supplied by the Manufacturer.
- Insert the new filter in the guides.
- Remove the active carbons filter on the rear side of the unit and replace it by a new one.
- Suitable plastic bags can be supplied by the Manufacturer.
- Insert the new filter in the guides.
- Close the inspection panel and check that it is completely closed and that the sealing gasket is positioned correctly.
- Reinsert the plug into the socket and turn on the switch.
- Dispose of the dirty filters according to the regulations in force locally. Ask the local waste disposal company for the relevant waste disposal codes.
- Finally clean the surrounding area, e.g. with an "H" class industrial vacuum cleaner for dust.

7.4. Maintenance on motor

The motor of the unit AIRFORCE FE110 is equipped with removable brushes, which, after reaching a certain level of wear, come into contact and block the operation of the air purifier. Then these must be replaced.

Take away the active carbons filter on the rear side of the unit to access the motor brushes. Disconnect the cables connected to the motor.

Replace the brushes as shown in the following picture:



Reinsert the all the components (paying attention to the correct sequence).
Wait for the sealant to dry before starting and using the device again.



7.5. Troubleshooting

FAILURE	POSSIBLE CAUSE	ACTION REQUIRED
The unit does not turn on	No power supply	Contact an electrician
	Fuse is burned	Replace the fuse 5x20 10A
	Motor is burned	Contact the technical service
	Brushes are worn	Replace the brushes
The extraction capacity is poor	Filters are dirty	Replace filters
Not all fumes are captured	Excessive distance between the capture hood and the welding point	Bring the hood closer

7.6. Emergency measures

In the event of a fire in the unit or in its suction device, proceed as follows:

- Disconnect the unit from the mains supply, removing the plug from the socket, if possible.
- Try to extinguish the outbreak of fire with a standard powder extinguisher.
- If necessary, contact the fire brigade.



WARNING

Do not open the inspection panel of the unit.
Possibility of flare-ups!
In case of fire, do not touch the unit for any reason without suitable protective gloves.
Danger of burns!



8. DISPOSAL



WARNING

Skin contact with dangerous fumes etc. can cause skin irritation in sensitive individuals. The disassembly of the unit shall be carried out exclusively by specialized personnel, trained and authorized, in compliance with the safety instructions and the regulations for accident prevention.

Possibility of serious damage to health, affecting the respiratory system.

To avoid contact and inhalation of dust, wear protective clothing, gloves and a respirator! Avoid any diffusion of dangerous dust during disassembly, in order not to jeopardize the health of people nearby.

Use a class "H" industrial vacuum cleaner to clean up the area.



WARNING

For all activities performed on and with the unit, comply with the legal obligations for the prevention of accidents and for correct recycling / disposal of waste.

8.1. Plastics

Any plastic materials shall be picked out as much as possible and disposed in compliance with legal obligations.

8.2. Metals

Metals, such as the cabinet of the unit, shall be separated and disposed in accordance with the local regulations. Disposal shall be carried out by an authorized company.

8.3. Filter media

Any filtering media used shall be disposed of in compliance with local obligations.



9. ATTACHMENTS

9.1. AIRFORCE FE110 Technical data

FILTRATION DATA

DESCRIPTION	UM	VALUE	NOTES
FILTER STAGES	No	3	Spark arrestor filter, Cartridge filter, Active carbons filter
FILTER AREA	m ²	2,7	
FILTER	Materiale	80%cellulose + 20%pet	Cartridge filter
EFFICIENCY		>99%	Cartridge filter
DUST CLASSIFICATION	DIN EN 60335-2-69:2010	M	Cartridge filter
FILTERING MEDIA - WEIGHT	g/m ²	114	Cartridge filter
FILTERING MEDIA - THICKNESS	mm	0,28	Cartridge filter
ACTIVE CARBONS	Kg	0,89	

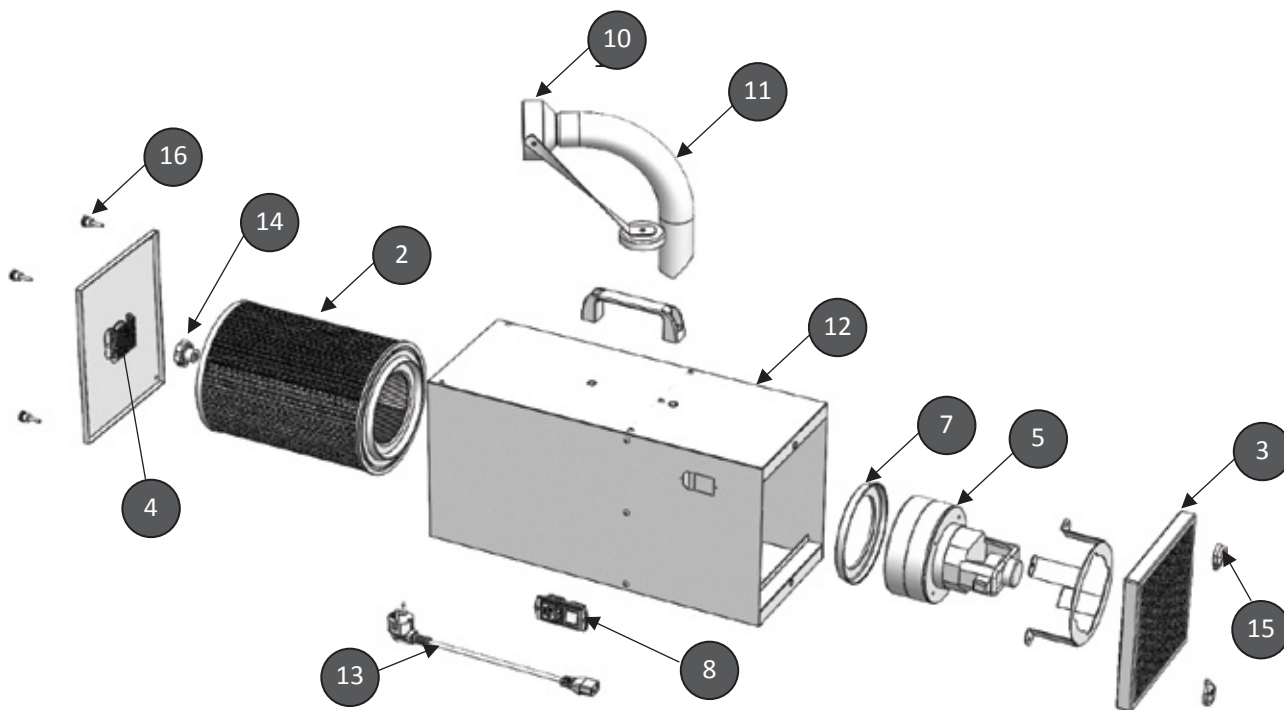
EXTRACTION DATA

DESCRIPTION	UM	VALUE	NOTES
EXTRACTION CAPACITY	m ³ /h	150	Measured with clean filters
MAX FAN CAPACITY	m ³ /h	200	
NOISE LEVEL	dB(A)	72	
<i>Single-phase version 230V</i>			
MOTOR POWER	kW	1,1	
MAINS SUPPLY	V/ph/Hz	230/1/50	
ABSORBED CURRENT	A	5	

ADDITIONAL INFORMATION

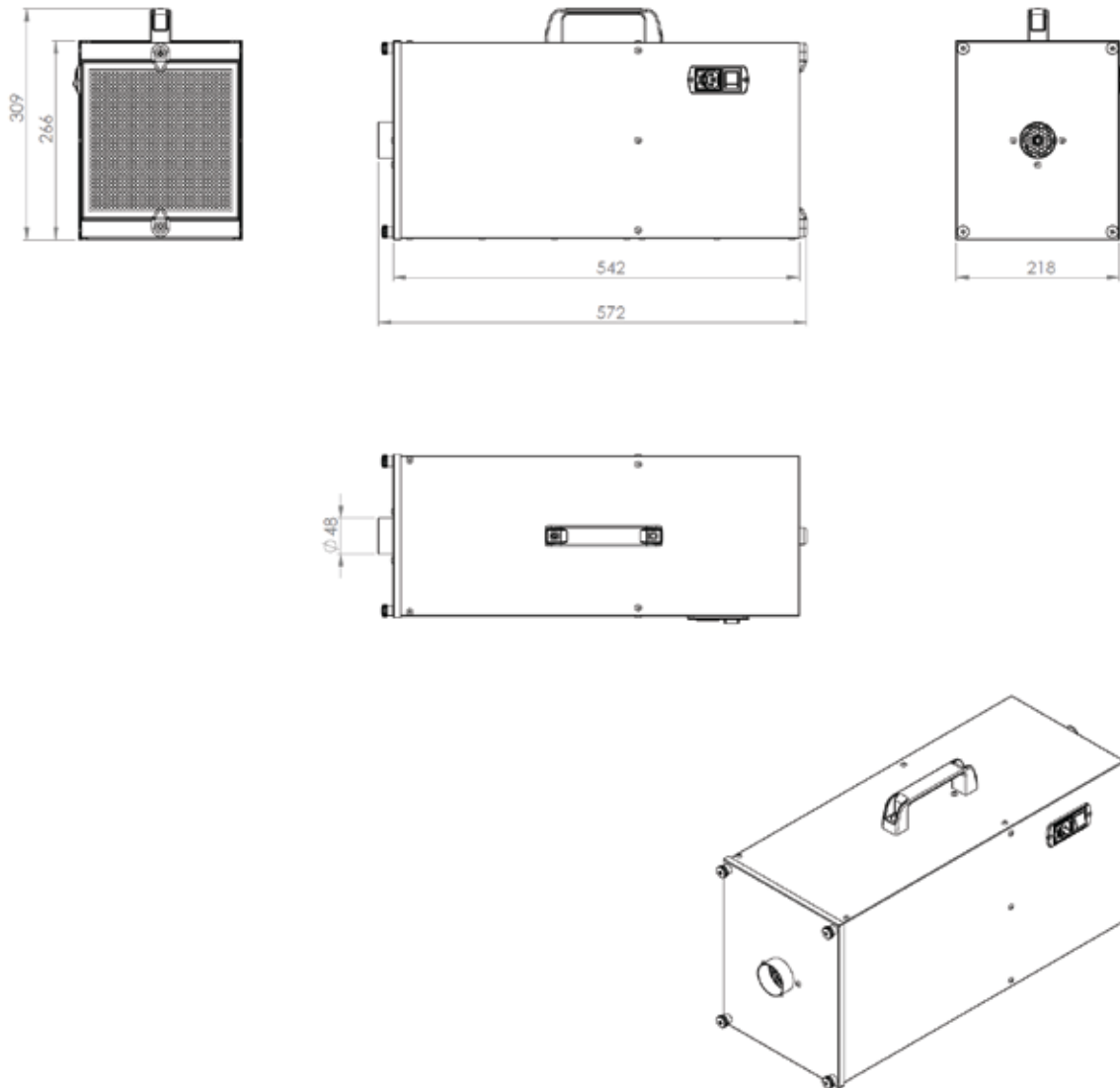
DESCRIPTION	UM	VALUE	NOTES
EXTRACTOR	Type	Brush motor extractor fan	
DIMENSION	mm	215x545x265 h	
WEIGHT	Kg	12	

9.2. Spare parts and accessories

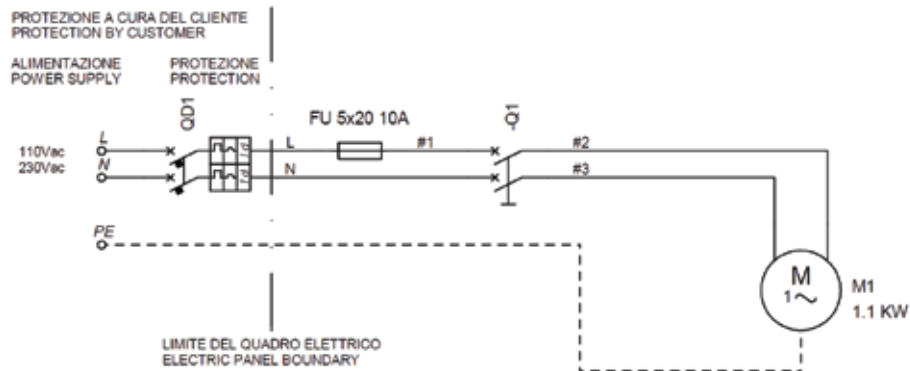


N°	Codice P/N	U.M.	Q.tà	Descrizione
1	5AER1103000	NR	1	Cabinet
2-3-4	RFOAER1100002	NR	1	Filter set: Cartridge + Prefilter + active carbons
2	RFOAER1100003	NR	1	Cartridge filter Eff. 99%
5	DB00060	NR	1	Motor 230V single-phase
	DB00067	NR	1	Motor 110V single-phase
6	RICAER0000SPZB	NR	1	Motor brushes (2 pcs)
7	DBGUARN48SH50	NR	1	Rubber gasket 4.8 mm for motor
8	DBBZ15011	NR	1	Panel socket 250V 10A
10	RICAER0010SPZB	NR	1	Capture hood with rod and magnet
11	T1920000000050	NR	1	Flex hose D.50 L.2m
12	DBMANUNI20	NR	1	Handle
13	DBPZ2201020LK	NR	1	Cable with Schuko
-	ACCTF0000000520	NR	2	Fuse 5x20 10A
14	COM00196	NR	1	Fastener for cartridge filter
15	COM00215	NR	2	Fastener for active carbons filter
16	COM00198	NR	4	Fastener for inspection door

9.4. Dimensions



9.5. Wiring diagram





FE110

Warranty

As part of an on-going commitment to excellence in product support, Euroquip offers a comprehensive product warranty program.

Warranty period for the Strata Airforce FE110:

Commercial Use: 24 Months

Domestic Use: 24 Months

Warranty covers failure caused by manufacturing and material defects in the product, during the warranty period specified. The warranty period begins when the product is purchased by the end user. Warranty is not transferrable and is only claimable by the original purchaser.

Warranty does not cover parts that are subject to wear and tear from usage, such as hoses, filters etc.

Warranty covers failure of a product caused by defective materials and/or manufacturing for the period given and the usage specified by Euroquip. The warranty period begins when the product is purchased by the end user. Warranty is not transferrable and is only claimable by the original purchaser.

Warranty also does not cover failure caused by the untimely replacement or service of the above wearing parts. Evidence must be provided that the product has been maintained and serviced suitably for a claim to be considered under warranty.

Failure caused by incorrect operation of the product, lack of proper care and maintenance of the product, external damage, external circumstances such as poor power, non standard filter usage, modifications to the product, attempted repair/ service by a party other than an Approved Service Agent, is not covered under warranty.

Warranty does not cover pre delivery service and adjustment, or failure that may occur as a result of lack of/ incorrect pre delivery service and adjustment.

Warranty does not cover any incidental, indirect or consequential loss, damage or expense that may result from any defect, failure or malfunction of a product.

Should any issue be found to be a combination of a warranty failure and a non-warranty issue, the repair cost component to rectify and repair the non-warranty failure is the customers' full responsibility.

The decision that an issue with a product qualifies as a warranty claim is made at the sole jurisdiction of Euroquip.

No costs incurred will be considered under warranty if repairs are carried out by a party other than a Euroquip Approved Service Agent, unless with prior consent in writing from Euroquip.

It is the responsibility of the purchaser to deliver a product under warranty to the nearest relevant service agent or product reseller. Warranty does not cover call outs, mileage and freight costs.

If a product is repaired under warranty, parts and labour required for the repair will be supplied at no charge. Warranty assessment and repair will be scheduled and executed according to the normal work flow at the service location and depending on the availability of suitable replacement parts.

This warranty policy is an additional benefit and does not affect the legal rights of any end user, reseller or service agent.



FE110



Congratulations on your new STRATA product. We are proud to have you as our customer and will strive to provide you with the best service and reliability in the industry. This product is backed by our extensive warranty and world-wide service network. To locate your nearest distributor or service agency visit www.strata.co.nz, or email us at customerservice@euroquip.co.nz

www.strata.co.nz